

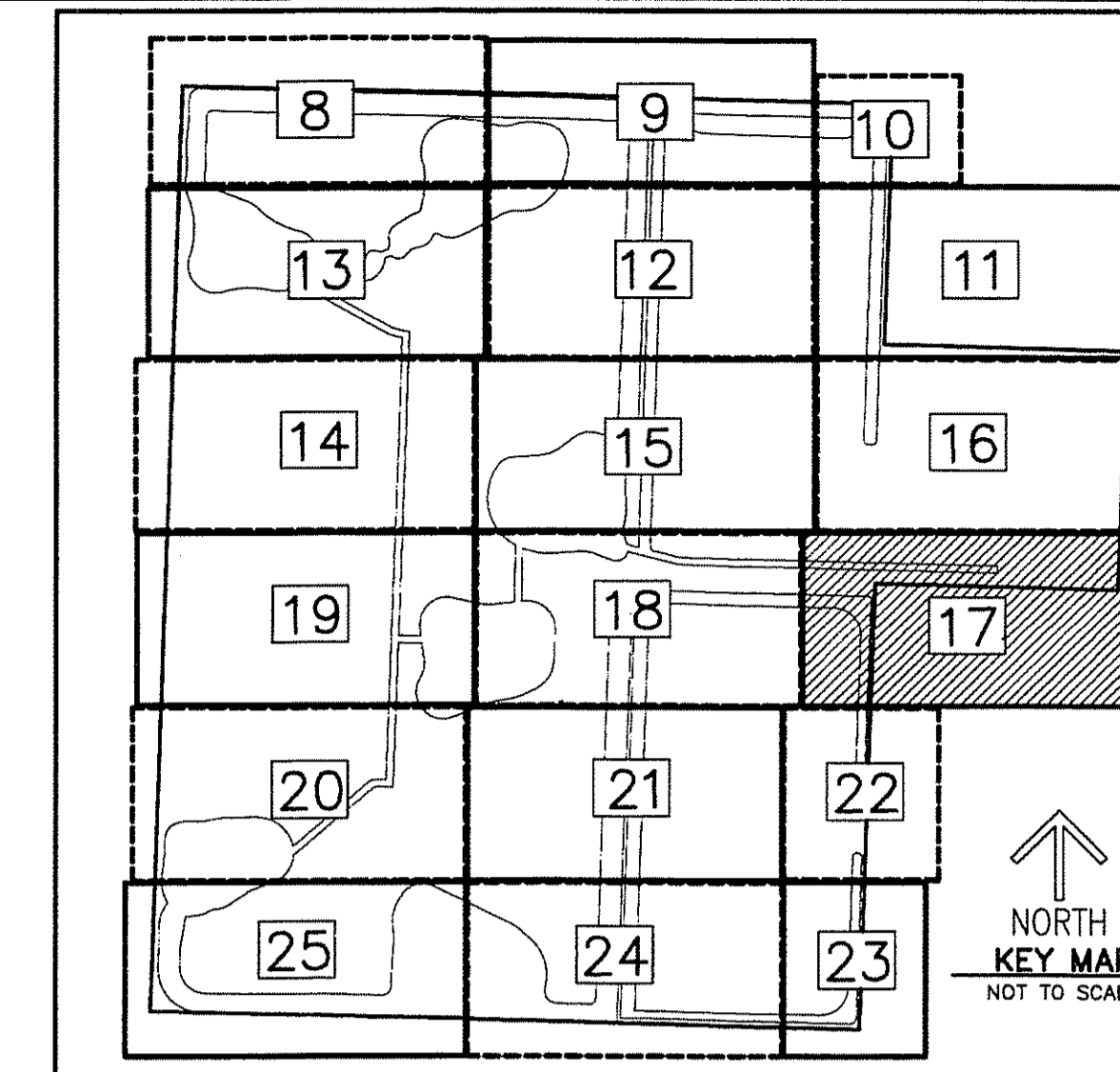
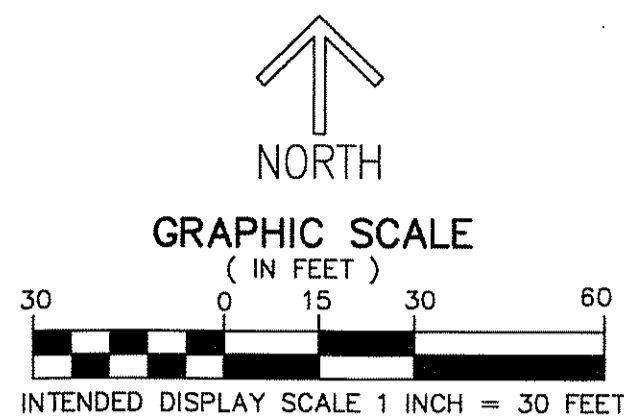
THIS INSTRUMENT PREPARED BY
 DAVID P. LINDLEY
 OF
CAULFIELD and WHEELER, INC.
 SURVEYORS - ENGINEERS - PLANNERS
 7900 GLADES ROAD, SUITE 100
 BOCA RATON, FLORIDA 33434 - (561)392-1991
 CERTIFICATE OF AUTHORIZATION NO. LB 3591

EVERGLADES POLO

A PORTION OF THE SOUTHWEST 1/4 OF SECTION 33, TOWNSHIP 44 SOUTH, RANGE 41 EAST,
 VILLAGE OF WELLINGTON, PALM BEACH COUNTY, FLORIDA

EASEMENT DETAILS

- LEGEND/ABBREVIATIONS**
- AC - ACRES
 - FPL - FLORIDA POWER & LIGHT CO.
 - LB - LICENSED BUSINESS
 - O.R.B. - OFFICIAL RECORD BOOK
 - SF - SQUARE FEET
 - Δ - DENOTES CENTRAL ANGLE
 - R - DENOTES RADIUS
 - L - DENOTES ARC LENGTH
 - PRM - DENOTES PERMANENT REFERENCE MONUMENT
 4" x 4" x 24" CONCRETE MONUMENT WITH ALUMINUM DISK STAMPED "C&W PRM LB3591"
 - - DENOTES PERMANENT REFERENCE MONUMENT
 NAIL AND METAL DISK STAMPED "PRM LB3591"



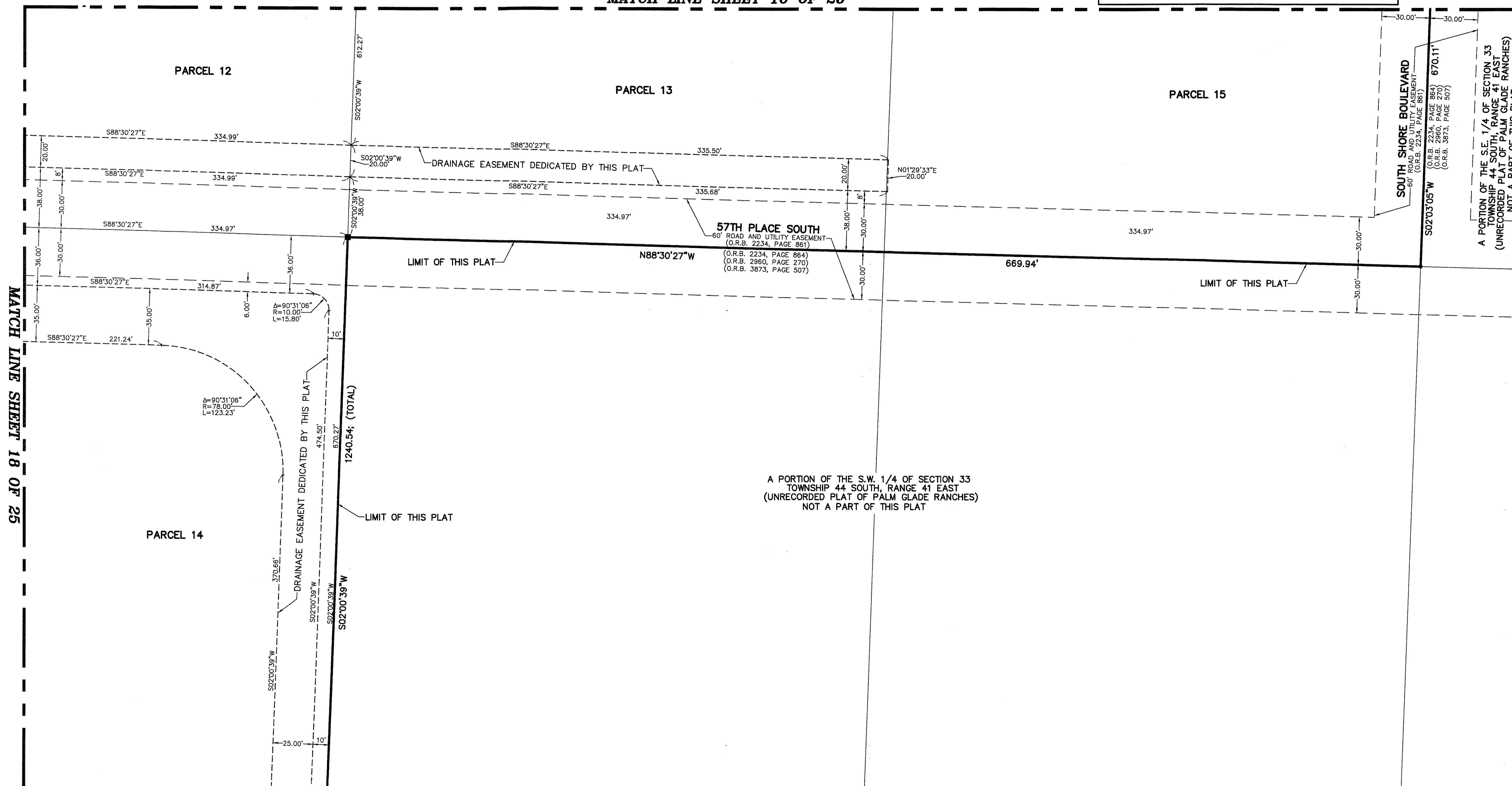
174

STATE OF FLORIDA
 COUNTY OF PALM BEACH
 THIS PLAT WAS FILED FOR
 RECORD AT _____ M.
 THIS _____ DAY OF _____
 A.D. 201____ AND DULY RECORDED
 IN PLAT BOOK _____ ON
 PAGES _____ AND _____
 SHARON R. BOCK
 CLERK AND COMPTROLLER

BY: _____
 DEPUTY CLERK

SHEET 17 OF 25

MATCH LINE SHEET 16 OF 25



A PORTION OF THE S.W. 1/4 OF SECTION 33
 TOWNSHIP 44 SOUTH, RANGE 41 EAST
 (UNRECORDED PLAT OF PALM GLADE RANCHES)
 NOT A PART OF THIS PLAT

SOUTH SHORE BOULEVARD
 60' ROAD AND UTILITY EASEMENT
 (O.R.B. 2234, PAGE 861)
 670.11'
 (O.R.B. 2234, PAGE 864)
 (O.R.B. 2960, PAGE 270)
 (O.R.B. 3873, PAGE 507)

A PORTION OF THE S.E. 1/4 OF SECTION 33
 TOWNSHIP 44 SOUTH, RANGE 41 EAST
 (UNRECORDED PLAT OF PALM GLADE RANCHES)
 NOT A PART OF THIS PLAT

MATCH LINE SHEET 22 OF 25